

Bits Art Quilters

Exhibit for Innovations in Textiles STL 2019

TOTEMS: PERSONAL STORIES IN FIBER

Enter an enchanted forest of 3-dimensional art quilts. Between 4 and 6 feet tall, each totem is the artist's unique creative expression in fiber, fabric, embellishment, and stitch.

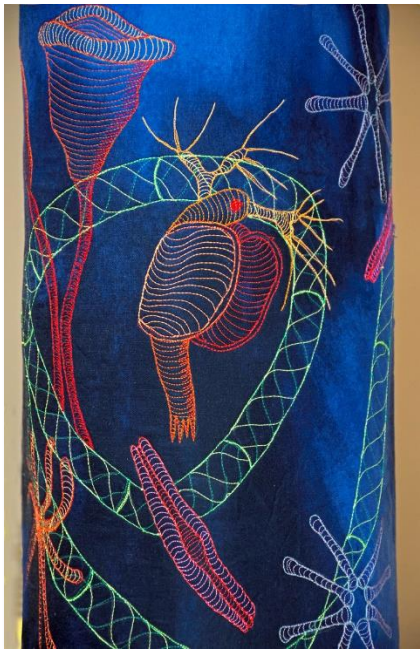
Dates: October 4 - November 1

Location: Blue Bird Park, 225 Kiefer Creek Road, Ellisville, MO 63021

Hours: Monday – Friday, 8:30 am - 5:00 pm

Special Exhibit hours:

- Sat Oct 5, 9:00 am - 5:00 pm
- Sun Oct 6, 12:00 noon to 5:00pm including RECEPTION 2:00 - 4:00pm



Left: Artist: Cindy Bell Neville
Photo credit: Cindy Bell Neville



Right: Artist: Jane Sears Falconer
Photo credit: Cindy Bell Neville

About Bits Art Quilters

Brief History: Bits Art Quilters is a sub-group of Bits 'n' Pieces Quilt Guild of Ballwin, MO, formerly known as Art Bits. Started as Exploring Art Quilts in October 2007 by Candy Grisham, Judy Humphrey, Wendy Carter Richards, and Jeri Wagner, the original purpose of the 12-member group was to meet monthly with like-minded creative people and learn art quilting tools and techniques.

Fast forward to 2019 where the group continues to meet monthly with up to 25 members with a focus on creativity, supporting each other, and exhibiting our work.

Meetings: Second Wednesday of the month, except December. 2-4pm. Currently closed to new members until August 2019; contact to be put on wait list. West County EMS Community Room at 223 Henry Ave, Manchester, MO 63011.

Contact: Wendy Richards 636-394-9250 or whoob@aol.com

Artists: Deb Akin, Mary Ann Anderson, Becca Baumann, Ginger Carter, SherryAnn Cordover, Kay Edmonds Erb, Jane Sears Falconer, Candyce Grisham, Joanne Halliburton, Patricia W. Hill, Kate Howell, Jamis Kresyman, Dana Lewis, Gail MacCartney, Louise Morris, Cindy Bell Neville, Linda Reel, Wendy Carter Richards, Sandra Kouba Sagan, Polly Sievert, Kay Strebeck, Karen Turner, Karen Tye, Jane Unger, Linda Kamp Waugh